

DARK STREET R4.00

SPACE SAVING TENTS WITH PREMIUM QUALITY

DS60



DS90



DS120



DS120W



DS150W



The Dark Street grow tent is designed for plants measuring 50cm to 150cm (20 to 60in) tall, with grow spaces of 0.36 to 1.44m² (4 to 16 ft²). It features DUCTING FLANGES (DF16) for managing intake/exhaust and comes with everything you need to install the complete system. The grow tent comes in a sturdy bag with a shoulder strap. The configuration advice provided in terms of ventilation, lighting and extraction is specific to intensive Level III growing, for sun-loving plants. Divide these figures by 2 or by 4 for Level II and Level I growing.

REFERENCE	DESIGNATION METRIC	DESIGNATION IMPERIAL
DS60	Dark Street 60x60x158 cm	Dark Street 2' x 2' x 62"
DS90	Dark Street 90x90x178 cm	Dark Street 3' x 3' x 70"
DS120	Dark Street 120x120x200 cm	Dark Street 4' x 4' x 79"
DS120W	Dark Street 120x60x178 cm	Dark Street 4' x 2' x 70"
DS150W	Dark Street 150x77x200 cm	Dark Street 4' x 2½' x 79"

VIDEO



GENERAL DETAILS

METRIC

IMPERIAL

	METRIC	IMPERIAL
Canvas	M210D Mylar	M210D Mylar
Poles	Ø16/19 mm Q195 Chrome plated	Ø0.63/0.75" Q195 Chrome plated
Corners	2.0/4.0 mm PolyPropylene	0.07/0.15" PolyPropylene
Water Tray	Removable M210D Mylar	Removable M210D Mylar
Bottom & Bag	PE600D & PE210D	PE600D & PE210D



Q195 Steel

Ø16-19mm | Ø0.63-0.75in



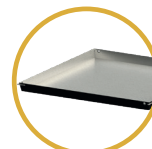
Opening 270°

Full plant access



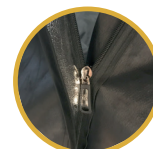
Fully Pre-equipped

Adapt to your needs



Water tray

Strong & Removable



100% Lightproof

Double-flap zip

SPECIFICATION & ADVISED : METRIC

DARK STREET		REF	DESIGNATION	REV	WGT Net kg	ASSEMBLED W cm			POLES Ø mm	WEB PLANT SUPPORT Included	WATER TRAY Included	DUCTING FLANGES INCLUDED			CABLE Flange CF7 #	HANDLING # L cm Weight Per Pole		ACCESSORIES StrapT Pair #	CableT #	Grid6040 #
DS60	Dark Street 60 x 60 x 158 cm	R4.00	6.7	60	60	158	16	1 WEBT160	1 WTL60	2 DF16	2	-	-	1	1	60	10 kg	20 kg	1	15
DS90	Dark Street 90 x 90 x 178 cm	R4.00	9.0	90	90	178	16	1 WEBT190	1 WTL90	2 DF16	2	-	-	1	1	90	10 kg	20 kg	1	15
DS120	Dark Street 120 x 120 x 200 cm	R4.00	14.6	120	120	200	19	1 WEBT120	1 WTL120	2 DF16	-	-	2	1	1	120	15 kg	30 kg	1	15
DS120W	Dark Street 120 x 60 x 178 cm	R4.00	9.8	120	60	178	16	1 WEBT120W	1 WTL120W	2 DF16	-	2	-	1	1	120	10 kg	20 kg	1	15
DS150W	Dark Street 150 x 77 x 200 cm	R4.00	14.1	150	77	200	19	1 WEBT150W	1 WTL150W	2 DF16	-	-	2	1	1	150	15 kg	30 kg	1	15

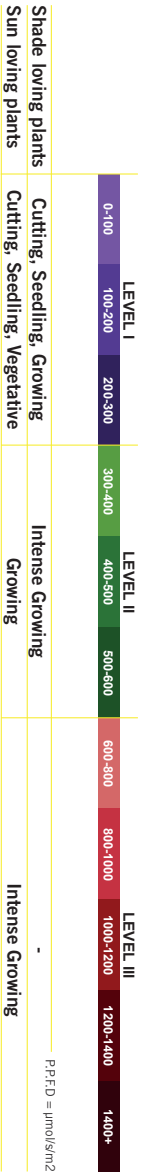
DARK STREET		MONKEY	LIGHTING ADVISED		VOL	EXTRACTOR ADVISED WHEN FILTER ON (**)	
REF	FAN ADVISED	Level III LED PE2.7	Level II LED PE2.7	cf	1 min cycle Extraction	2 min cycle Extraction	Intake
DS60	1 MF16	100 W	40 W	29	90 cfm	50 cfm	-
DS90	1 MF16	200 W	100 W	62	150 cfm	90 cfm	-
DS120	1 MFC20	400 W	200 W	112	210 cfm	150 cfm	-
DS120W	1 MF16	200 W	100 W	57	150 cfm	90 cfm	-
DS150W	1 MFC20	320 W	160 W	90	210 cfm	150 cfm	-

SPECIFICATION & ADVISED : IMPERIAL

DARK STREET		REF	DESIGNATION	REV	WGT Net lb	ASSEMBLED W in D in H in			POLES Ø in	WEB PLANT SUPPORT Included	WATER TRAY Included	DUCTING FLANGES INCLUDED			CABLE Flange CF7 #	HANDLING # L in Weight Per Pole		ACCESSORIES StrapT Pair #	CableT #	Grid6040 #
DS60	Dark Street 2' x 2' x 62"	R4.00	14.8	24	24	24	62	0.63	1 WEBT160	1 WTL60	2 DF16	2	-	1	1	24	20 lb	40 lb	1	15
DS90	Dark Street 3' x 3' x 70"	R4.00	19.8	35	35	70	70	0.63	1 WEBT190	1 WTL90	2 DF16	2	-	1	1	35	20 lb	40 lb	1	15
DS120	Dark Street 4' x 4' x 79"	R4.00	32.2	47	47	79	79	0.75	1 WEBT120	1 WTL120	2 DF16	-	-	2	1	47	30 lb	60 lb	1	15
DS120W	Dark Street 4' x 2' x 70"	R4.00	21.6	47	24	70	70	0.63	1 WEBT120W	1 WTL120W	2 DF16	2	-	1	1	47	20 lb	40 lb	1	15
DS150W	Dark Street 5' x 2 1/2' x 79"	R4.00	31.1	59	30	79	79	0.75	1 WEBT150W	1 WTL150W	2 DF16	-	-	2	1	59	30 lb	60 lb	1	15

DARK STREET		MONKEY	LIGHTING ADVISED		VOL	EXTRACTOR ADVISED WHEN FILTER ON (**)	
REF	FAN ADVISED	Level III LED PE2.7	Level II LED PE2.7	m3	1 min cycle Extraction	2 min cycle Extraction	Intake
DS60	1 MF16	100 W	40 W	0.6	150 m3/h	80 m3/h	-
DS90	1 MF16	200 W	100 W	1.4	350 m3/h	150 m3/h	-
DS120	1 MFC20	400 W	200 W	2.9	350 m3/h	250 m3/h	-
DS120W	1 MF16	200 W	100 W	1.3	250 m3/h	150 m3/h	-
DS150W	1 MFC20	320 W	160 W	2.3	350 m3/h	250 m3/h	-

LIGHT LEVEL VS GROW STAGE



secretjardin.com



Secret Jardin



Secret Jardin Official



Secretjardin_



info@secretjardin.com



SECRET JARDIN